



Hiiumaa

By Kärt Urman





This pattern is inspired by the national clothes of Hiiumaa island in Estonia. The aprons of Hiiumaa feature similar crochet lace.





Size: you can make it as big as you want

Material: It really doesn't matter which yarn you are using. I used about 500 yards / 550 meters of yarn (this includes the yarn for fringes).

Hook: Select it according to the yarn you are using.

Pattern notes:

Following stitches are used:

- Chain stitch 
- Double stitch 
- Two chain stitches: 
- Double crochet 2 together: 

Directions:

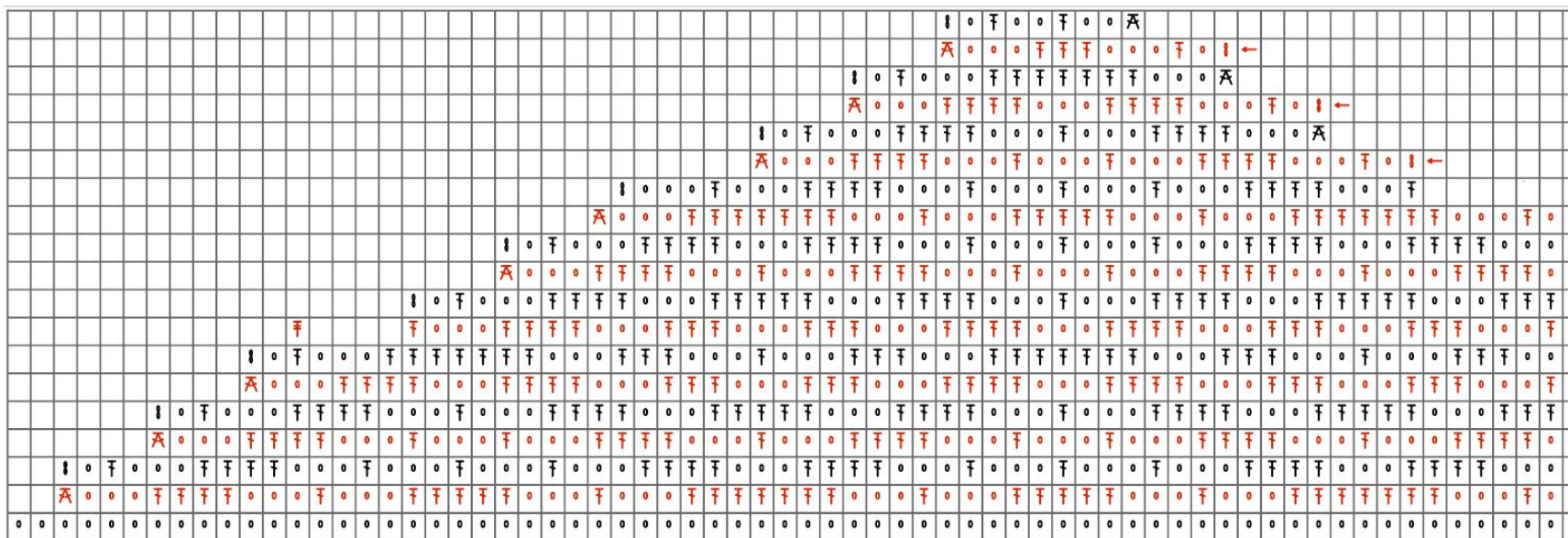
Shawl is started from the bottom and worked towards the top. This means that you have to begin with the chain long enough for the whole shawl. Make a chain that has multiple of 37 stitches + 12 stitches. Then start with second row.

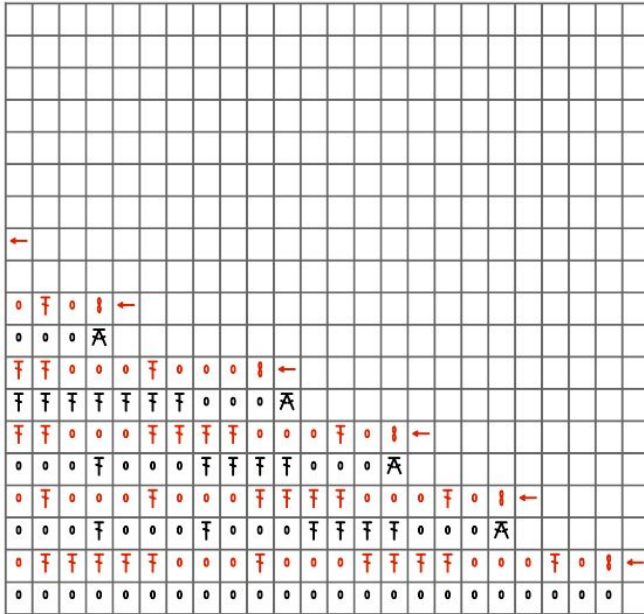
The chart doesn't fit very well to one page therefore it's split between two pages. I recommend to print it out and look it side by side.

Black rows begin from left and red rows from right. Since I had to use grid as a basis of the chart then edge stitches aren't exactly aligned as they should.

Tutorial for making fringes: <http://www.youtube.com/watch?v=M-Hyf8Vg-A>

Chart:





Finishing:

Weave in the ends. Wash the shawl and block it – that will make the stitches look more even and overall the shawl will look nicer.