



Lumine

By Kärt Urman





The name of this hat 'Lumine' means 'Snowy' in Estonian. I named the pattern so because this hat reminds me of snow and lace panel is like ice crystals on the window.

Size: one size (rather small)

Material: Takes about 70 m / 76 yards of bulky weight yarn. I used Sirdar Nova Super Chunky
Also 1 stitch marker is required.

Gauge: 12 sts = 10 cm / 4"

Needle size: 5 mm (US 8) circular needles (50 cm/20") and double pointed needles

Pattern notes:

K – Knit

P – Purl

YO - Yarn over

K2Tog – Knit 2 together

SKP – Slip 1 stitch knitwise, knit, pass the slipped stitch over

S – slip

PSSO – pass the slipped stitch over

Twisted rib – instead of usual knit stitch knit through back loop. Purl stitches are as usual.

Directions:

Cast on 76 sts. Join in round. Be careful not to twist. Mark the beginning of the round. Knit 5 rows in 1 k - 1 p twisted rib.

Knit 1 round in stockinette and increase evenly to 81 stitches.

In the beginning of the round start lace panel. Lace panel is 7 sts. All the remaining stitches knit in stockinette. Lace chart is below.

Continue until your work measures 13 cm / 5". Now start with decreases (continue with lace panel for as long as possible, switch to double pointed needles when necessary):

K9, K2TOG Repeat it until the end of the round. You have decreased 8 sts in total. Knit 1 round in stockinette.

Following decreases will be done this way:

*K8, K2TOG * (the number of knit stitches decreases by 1 every time)

Continue with decreases on every other round 5 more times. Then start decreasing on every round until you have 14 sts on needles.

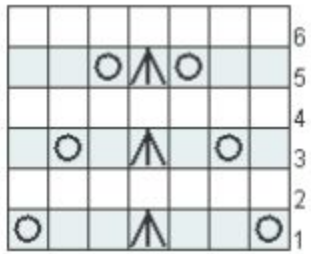
Continue decreasing the following way:

K1 K2Tog

You will have 7 sts on needles after that. Break the yarn and pull the end through all the stitches.

Finishing:

Weave in the ends. Wash the hat and block it – that will make the stitches look more even and overall the hat will look nicer.



Key

	s2,k1,p2sso
	y0
	k1