



# Old Chemistry

By Kärt Urman





*When I was knitting this shawl I got interested if there is some the motif in this shawl symbolizes anything. What I found was this:*



*An alchemical or old chemistry sign for flask, bottle, or recipient that is not transparent (source: <http://www.symbols.com/encyclopedia/22/2238.html> )*

*My shawl consists of upside down flasks! So this is why I named the shawl 'Old Chemistry'.*

**Size:** one size

**Material:** You can knit the shawl as big as you want. I used about 350 m / 380 yards of yarn..

**Gauge:** doesn't matter

**Needle size:** choose needles according to the yarn you are using. I used 3.5 mm / US size 4 needles.

**Pattern notes:**

Shawl is knit point-up. So you can knit it as big as you want without a fear of running out of yarn.

**Directions:**

Cast on 5 sts. Knit one row. Start the chart pattern. Chart doesn't show the whole shawl but by the time you have reached to the end of the chart you probably have captured the logic of the pattern (if not feel free to contact me).

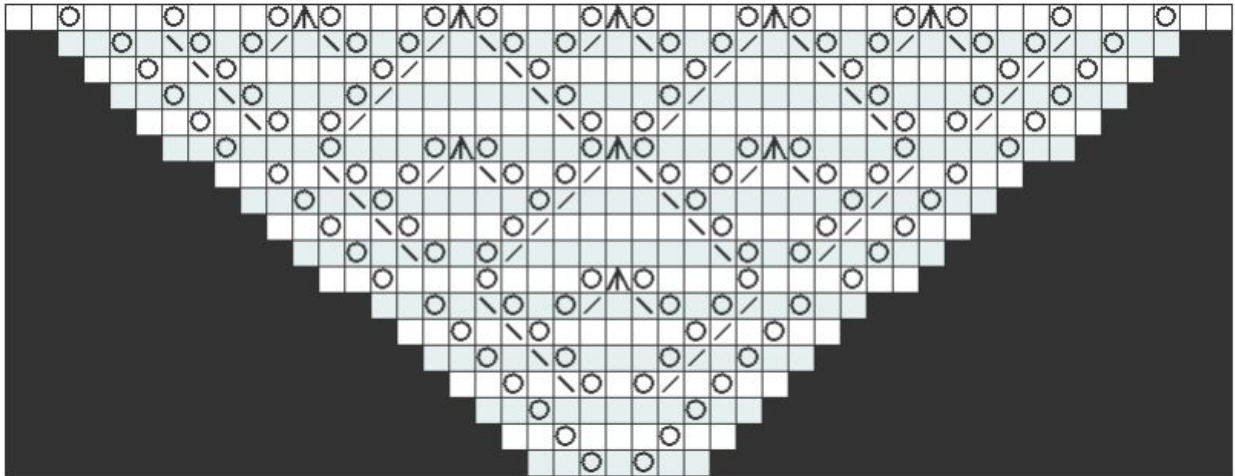
Chart shows only right-side rows. On wrong side knit 2 stitches on both sides. All the other stitches are purled.

When you have reached to the size you want knit last 4 rows in garter stitch so that you make yarn overs on both side on right side rows (K2, YO, knit until 2 stitches left, YO, K2). Then bind off all the stitches.

Block the shawl and attach fringes. Good tutorial can be found [here](#).



Chart:



Key



Chart repeats:

