



Staybridge

By Kärt Urman





This shawl was knit during my visit to US. I stayed at a hotel called Staybridge. So that's where pattern name comes from.

the

Size: one size

Material: You can knit the shawl as big as you want. I used about 770 m / 841 yards of laceweight mohair yarn held double. So if you don't hold yarn double you'll need at least 385 m / 421 yards of yarn.

Gauge: doesn't matter

Needle size: choose needles according to the yarn you are using. I used 4.5 mm / US size 7 needles.

Pattern notes:

Shawl is started from the center line. First one side is knit and then to other side. Lace edging is added later by picking up the edge stitches.

Directions:

Cast on multiple of 12 stitches + 23 stitches. I casted on 95 stitches. Be aware that this is going to be the center line of your shawl. So this will determine how big your shawl will be. Use provisional cast on. Tutorial can be found [here](#). Later you need to use those cast on stitches to start the other side of the shawl.

Purl one row. Start with chart 1. Not that chart depicts both – right and wrong side rows. Repeat the chart until you have 23 stitches on a needle. Then continue with chart 1a. After finishing that cast off.

Pick up stitches from the center line. Start knitting from the right side. Knit chart 2. Repeat the chart until you have 23 stitches left on a needle. Then continue with chart 2a. After finishing that cast off.

Pick up multiple of 8 + 15 stitches from the edges for a lace border. You need to have equal number of stitches on both sides of a triangle + 1 center stitch. From some side stitches you need pick up 2 stitches and from some just 1 stitch.

Chart 3 is for lace border. You must knit first pattern repeat until you reach to the center stitch. After that you need to repeat second pattern repeat. After you have finished lace border chart, cast off loosely.

	k1 on RS, p1 on WS
	p1 on RS, k1 on WS
	k2tog
	skp
	yo
	No Stitch

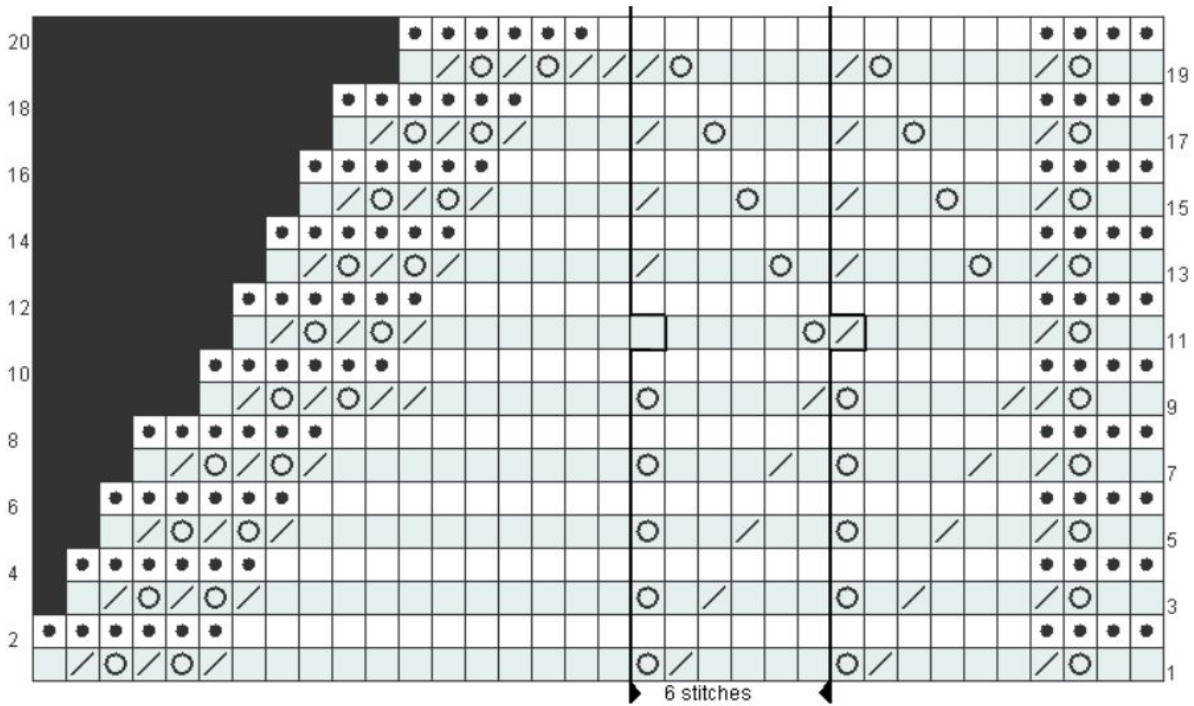


Chart 1

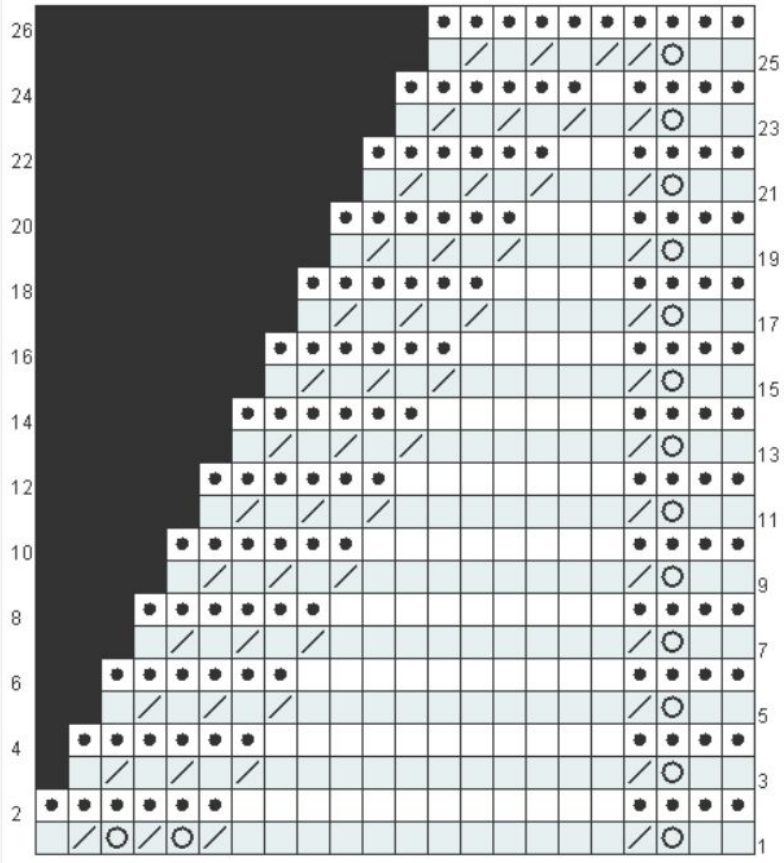


Chart 1a

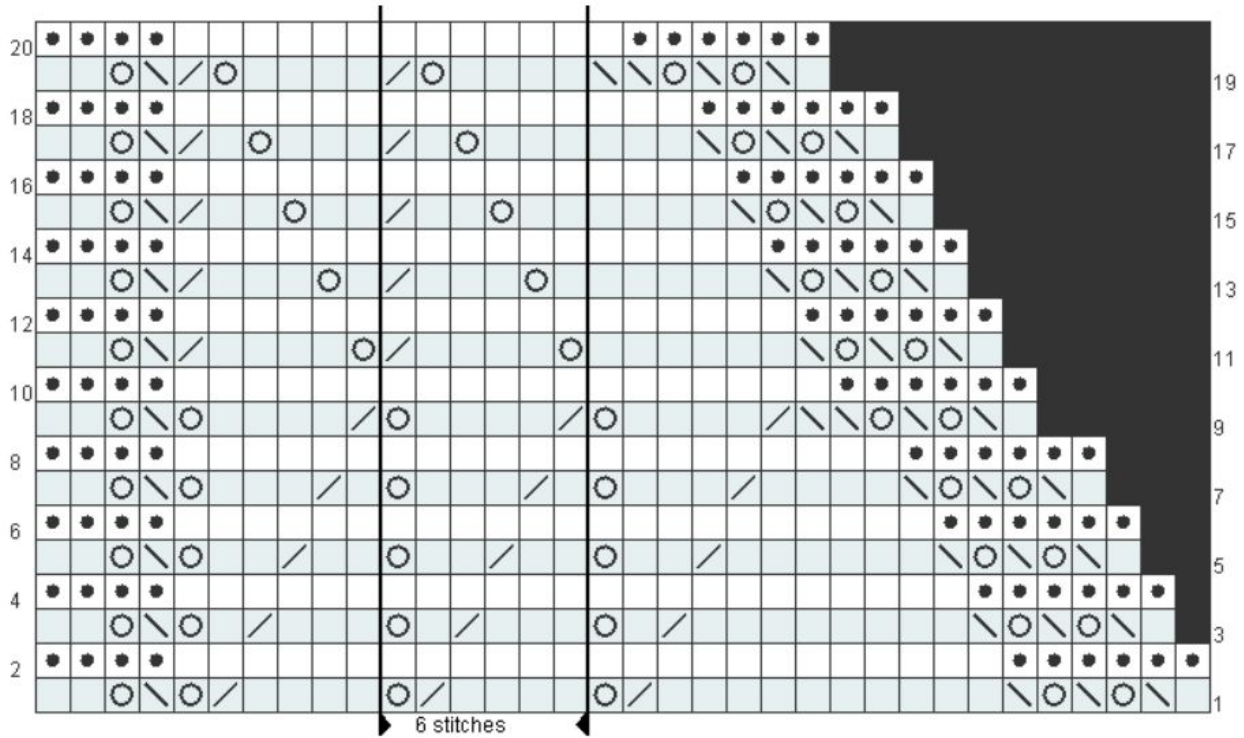


Chart 2

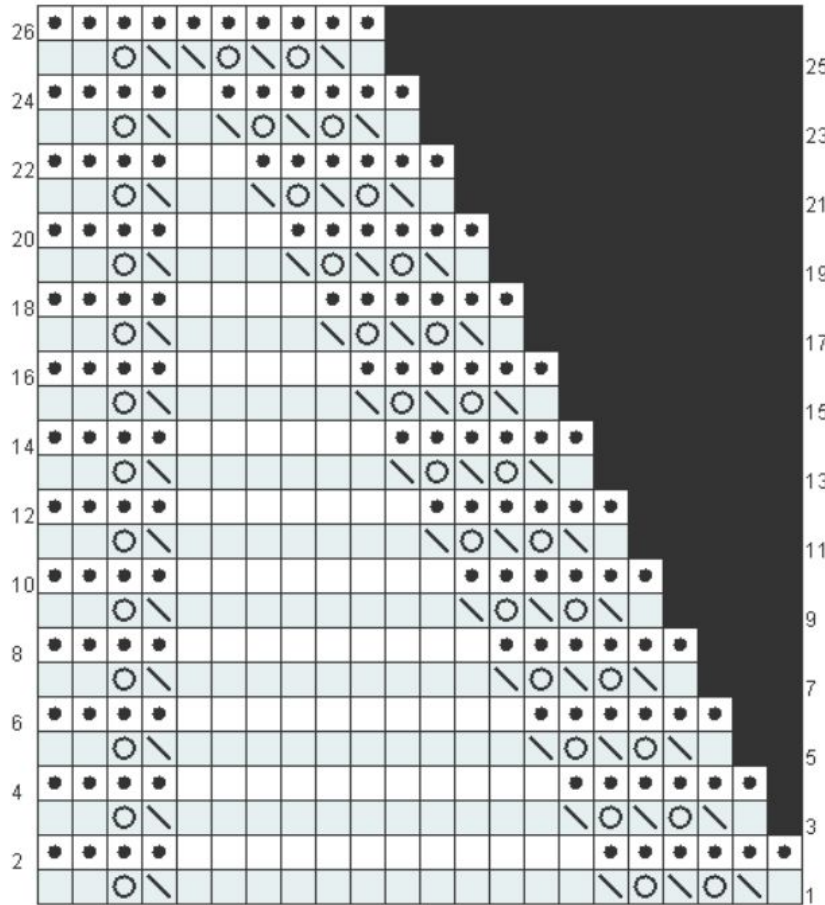
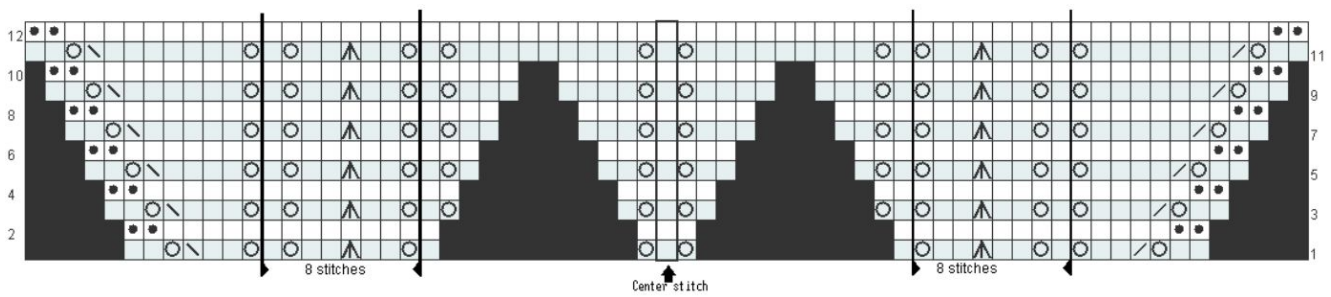
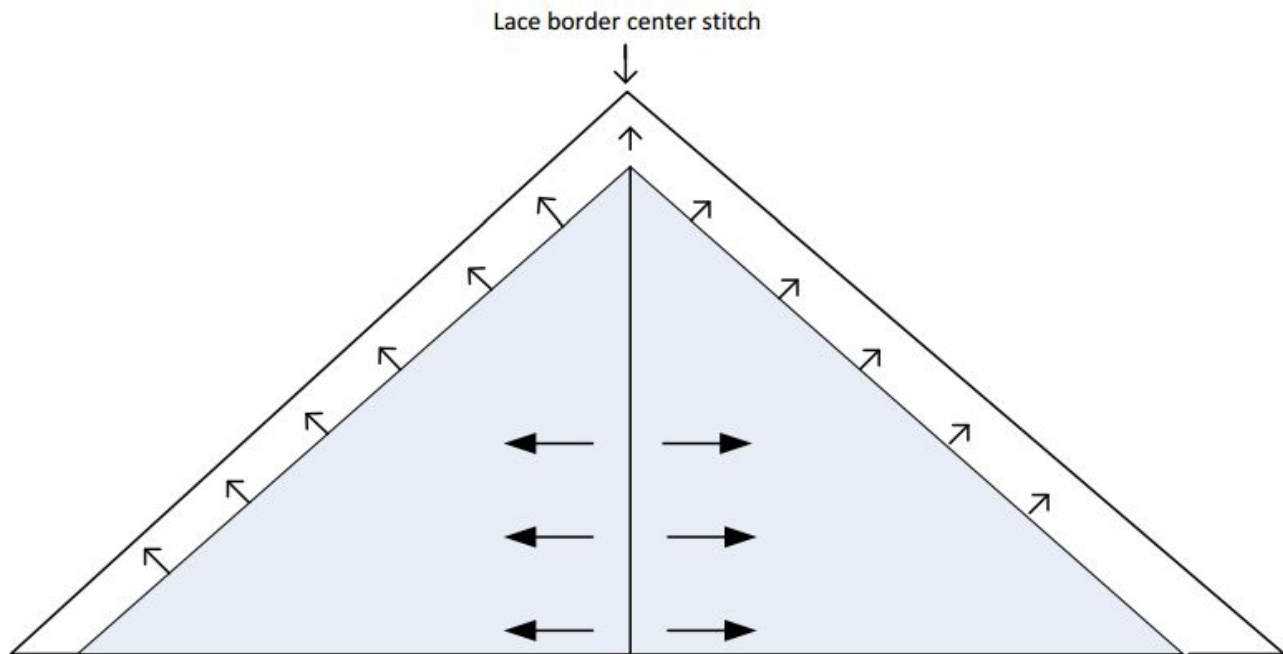


Chart 2a





General scheme:



Finishing:

Weave in the ends. Wash the shawl and block it – that will make the stitches look more even and overall the shawl will look nicer.